

V-Switch quad



Quad Multiviewer and KVM Switch

V-Switch quad simultaneously displays four analog or digital computers and video sources on a single screen. In addition, these computers can be controlled with just one keyboard and mouse or touch screen.

DVI & VGA, HDTV, PS/2 & USB

V-Switch quad can process analog and digital video signals via DVI-I ports as both inputs and outputs. Various video modes up to 1920x1200, including HDTV resolutions are supported. Additionally, any combination of input and output resolutions can be used. V-Switch quad also permits configuration of the EDIDs at the input ports. Computers with PS/2 and USB keyboard and mouse can be connected.

Operation

There are six different ways of switching between video channels and display modes: front panel buttons, configurable keyboard shortcuts (hotkeys), mouse (hotmouse function), via an external device configuration program, serial control devices via DCP-XML protocol, and touch screens.

Serial control, remote access, and touch screen compatibility

V-Switch quad supports external serial control via the DCP-XML protocol. In this way, it can be integrated into larger control and automation systems.

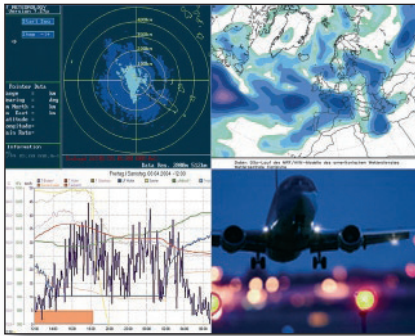
Combined with KVM over IP extenders, V-Switch quad enables location-independent remote control of the attached KVM devices. V-Switch quad is compatible with many touch screen models. While showing all sources simultaneously on the screen, they can be controlled with the touch of a finger.

Wide range of applications

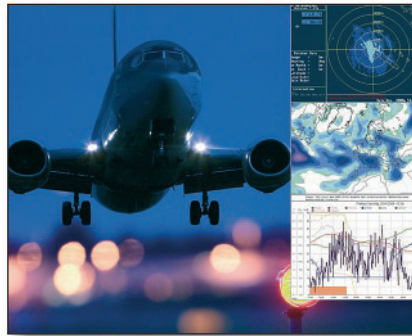
Areas of application include monitoring systems, process control centers, server rooms, medical industries, broadcasting, production and automation, aircraft and vehicles. In combination with projectors, V-Switch quad is also used in presentations and conference rooms.



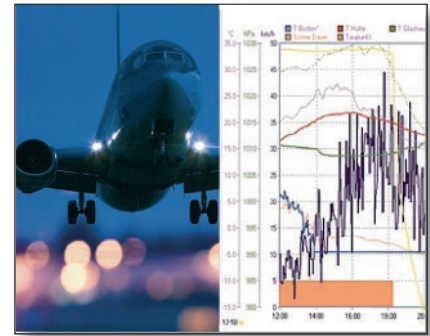
V-Switch quad



Quad mode



PiP mode



Dual mode

Quad mode

In Quad mode the screen is divided into four equal-sized areas. Each field displays the entire screen content of a video source or computer.

PiP mode

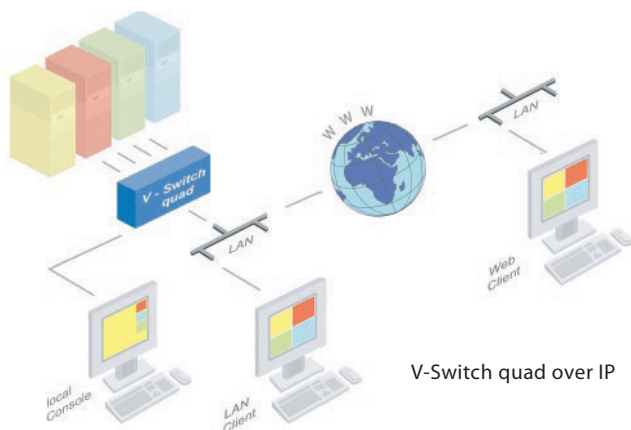
When the PiP (Picture in Picture) function is activated, up to all three other video sources are displayed on the right-hand side of the full-screen image as thumbnails, allowing them to be monitored simultaneously. Size, position and selection of these thumbnails are customizable.

Dual mode

In Dual mode the left halves of the fullscreen images from two video sources are displayed side by side at full size.

Fullscreen mode

In Fullscreen mode, one of the four video sources is shown at full screen size and maximum resolution.



Ordering information

| | |
|------------------|--|
| HE-VSW-QUAD | V-Switch quad, desktop, 19" rack mount kit |
| <i>optional:</i> | |
| HE-V-IP | V-IP (KVM over IP extender) |

Technical data

| | |
|------------------------------|--|
| Casing: | stainless steel, powder coated, dimensions: 436 x 234 x 44 mm (WxDxH), color: black (RAL 9005) |
| Computer ports: | 4 x DVI-I (analog and digital), 4 x PS/2, 4 x USB |
| Console ports: | 1 x DVI-I, 2 x USB for keyboard and mouse |
| Input and output resolution: | up to 1600 x 1200 @ 60 (VGA) up to 1920 x 1200 @ 60 (DVI) reduced blanking also supported HDTV modes supported up to 1920 x 1080 @ 60 Hz, progressive (non-interlaced) |
| Touch screen compatibility: | various models supported: details available upon request |
| EDID adjustment: | at each input port customizable |
| Supported keyboard layouts: | German, English, French, Italian, Spanish, Japanese |
| Power supply: | internal AC adapter, 100-240V, 50/60 Hz |
| Power consumption: | max. 35 watts |
| Operating temperature: | 5° to 45° C |
| Storage temperature: | - 10° to 60° C |
| Relative humidity: | 5 to 85% non-condensing |
| Weight: | 2,9 kg |
| Certificates: | CE, FCC, RoHS compliant |

HETEC Datensysteme GmbH

Landsberger Straße 65
D-82110 Germering, Germany
Tel.: +49 (0)89 - 89 43 67 - 0
Fax: +49 (0)89 - 89 43 67 - 99
Email: info@hetec.de
Web: www.hetec.de